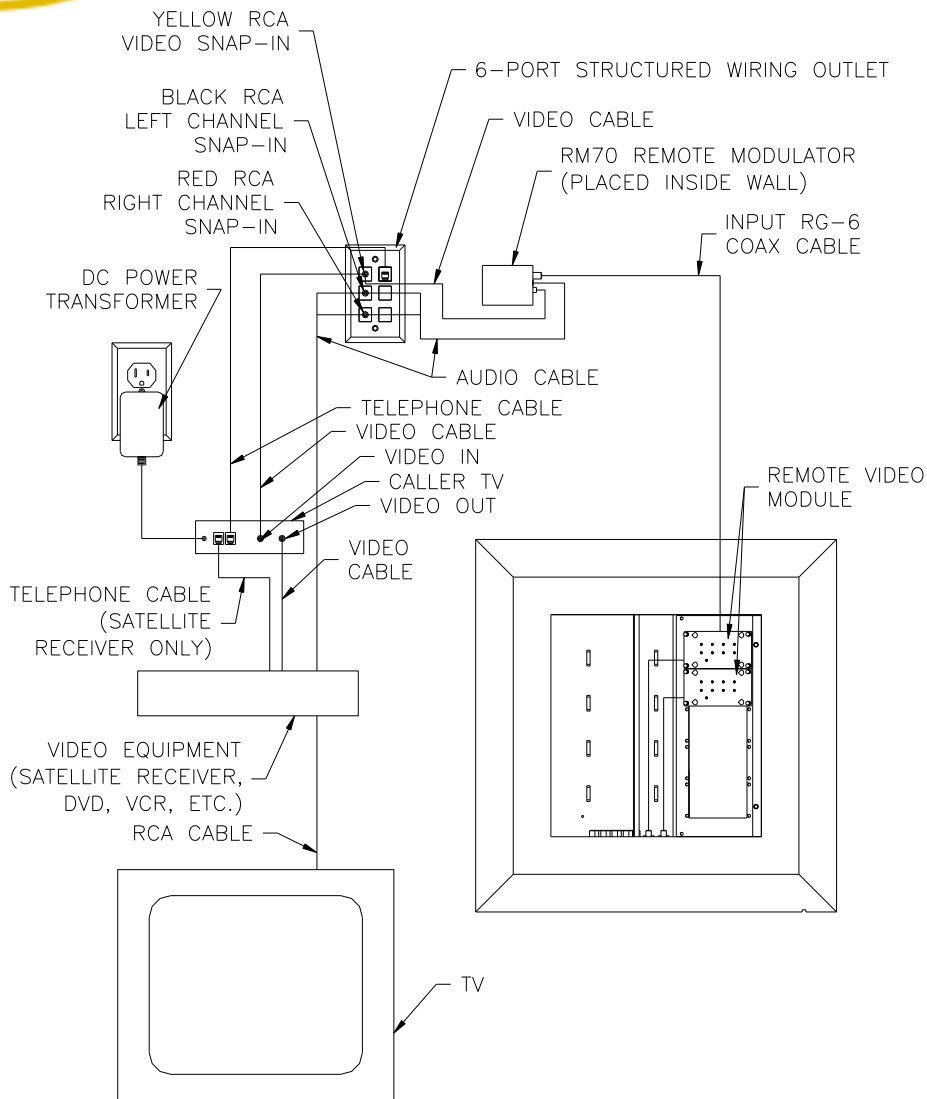


1. Install the StellarPlex Modulator (See Modulator Instructions).
2. Connect one end of the supplied telephone cable to the telephone jack in the structured wiring outlet and the other end to the RJ-11 port labeled LINE on the Caller-TV unit. Connect one end of a composite video cable to the video jack on the structured wiring outlet and the other end to the VIDEO IN connector on the Caller-TV unit. Plug the supplied DC transformer into an AC outlet and connect to the Caller-TV unit.



1. Install the StellarPlex Modulator (See Modulator Instructions).
2. Connect one end of the supplied telephone cable to the telephone jack in the structured wiring outlet and the other end to the RJ-11 port labeled LINE on the Caller-TV unit. Connect one end of a composite video cable to the video jack on the structured wiring outlet and the other end to the VIDEO IN connector on the Caller-TV unit. Connect one end of the audio cables to the audio jacks on the structured wiring outlet and the other end to the video equipment (DVD, satellite receiver, VCR, etc.); connect one end of the video cable to the VIDEO OUT connector on the Caller-TV unit and the other end to the video equipment. If you are connecting the Caller-TV unit to a satellite receiver, connect one end of a telephone cable to the TEL connector on the unit and the other end to the satellite receiver. Plug the supplied DC transformer into an AC outlet and connect to the Caller-TV unit.

To connect Caller-TV using S-Video, purchase the Caller-TV S-Video Adapter Kit.