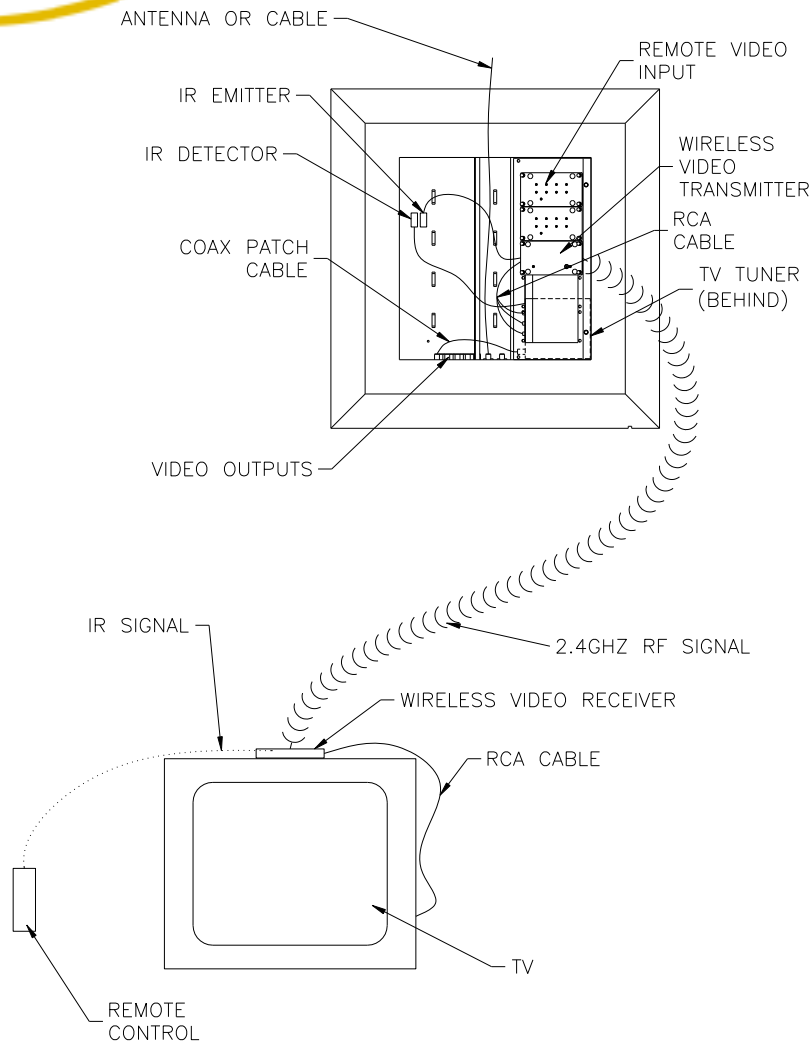




Wired and Wireless Hybrid Video System



1. Install the TV tuner in the StellarPlex ComCenter using the provided standoffs.
2. Install the wireless video transmitter module in the StellarPlex door. Set the DIP switch on the transmitter to the desired transmission channel (1,2,3, or 4).
3. Connect one end of a RG-6 patch cable to an output F-connector on the video module and the other end to the F-connector on the TV tuner. Connect one end of an RCA cable to the TV tuner and the other end to the wireless video transmitter module. Connect the IR emitter to the wireless video transmitter module and the IR detector to the TV tuner. Using the supplied DC power cables, connect the TV tuner and the wireless video transmitter module to the StellarPlex power module.
4. At each location where you want to receive wireless video, set the DIP switch on the receiver to match the setting on the transmitter. Connect the receiver to the TV using a RCA cable. Plug the transformer into an AC outlet and connect to the receiver. Turn on the receiver. Repeat for every location where you want to receive this wireless video signal. Four pairs of TV tuners and wireless video transmitters may be used to simultaneously view four different wireless video signals throughout your home. You may use any number of receivers with each wireless video transmitter and TV tuner.